



# Technical Data

Specification & Capacities



## JF545

S.N: \_\_\_\_\_



55,4kW/74,3HP



13 kW/17,4HP



0 – 28,2m



WINCH: 6000kg  
HOOK : 15500kg



EN 12999

[m] [kg]

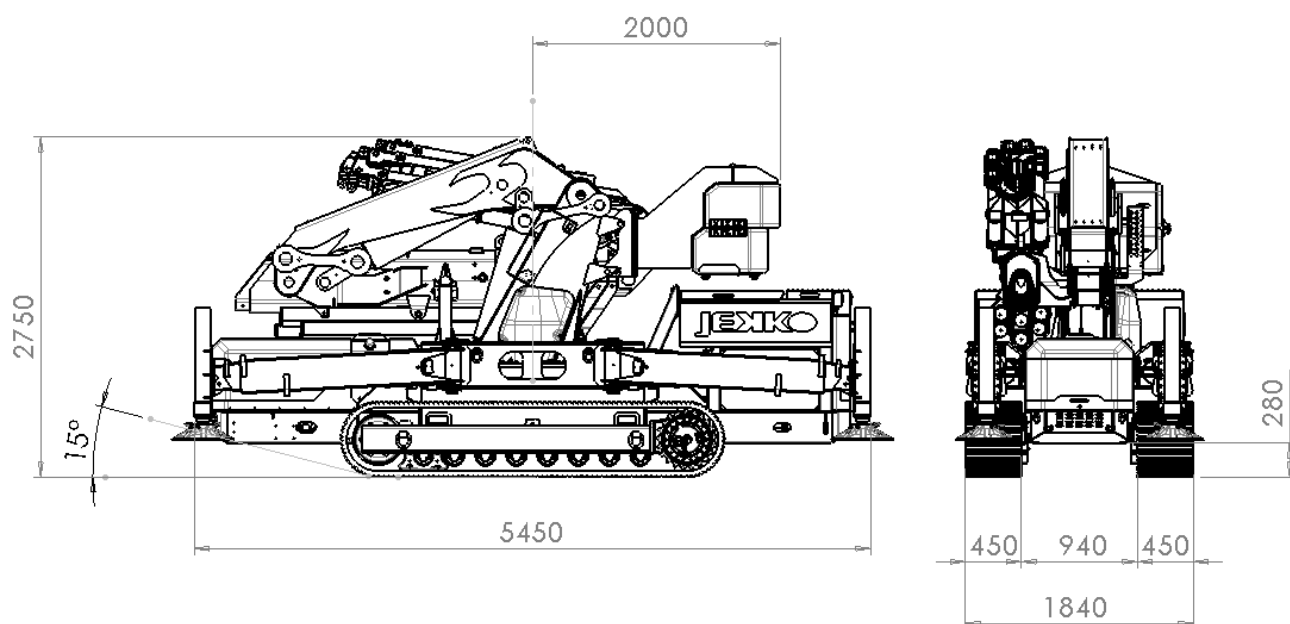




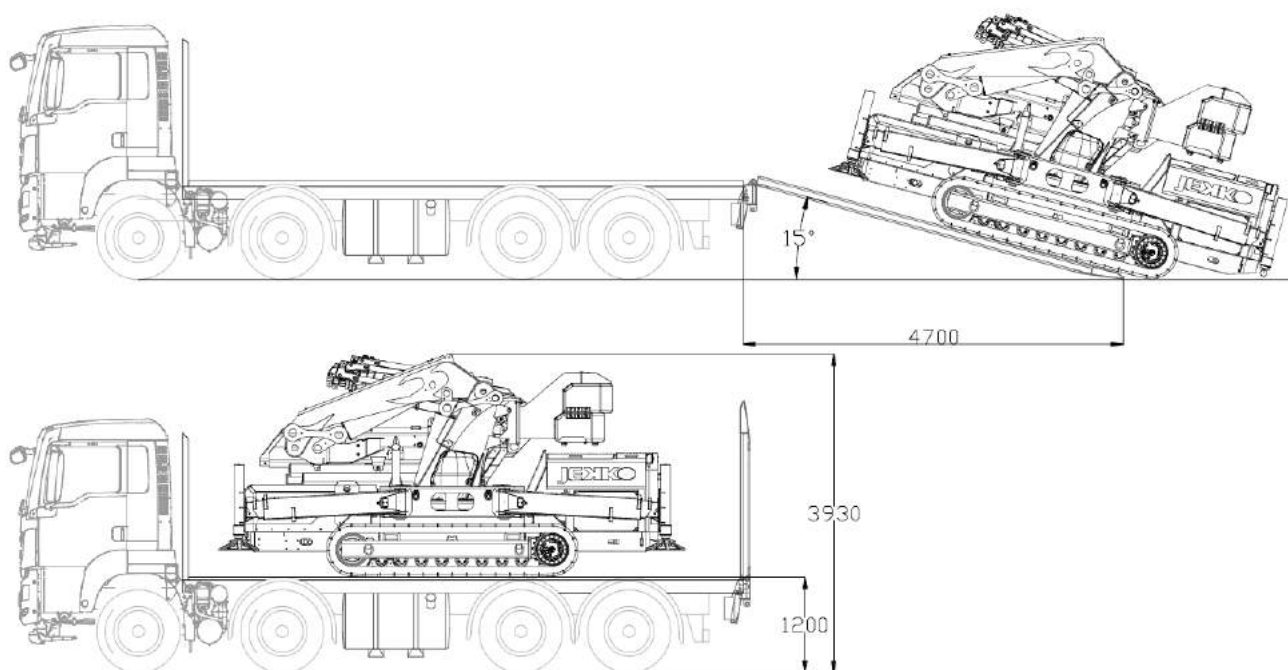
Via Campardone, 1  
31014 Colle Umberto – Italy  
Tel. +39 0438 1710083  
Mail: [info@jekko.it](mailto:info@jekko.it)  
Web: [www.jekko.it](http://www.jekko.it)

Date	May 4 <sup>th</sup> 2017
REV.	Rev. 0

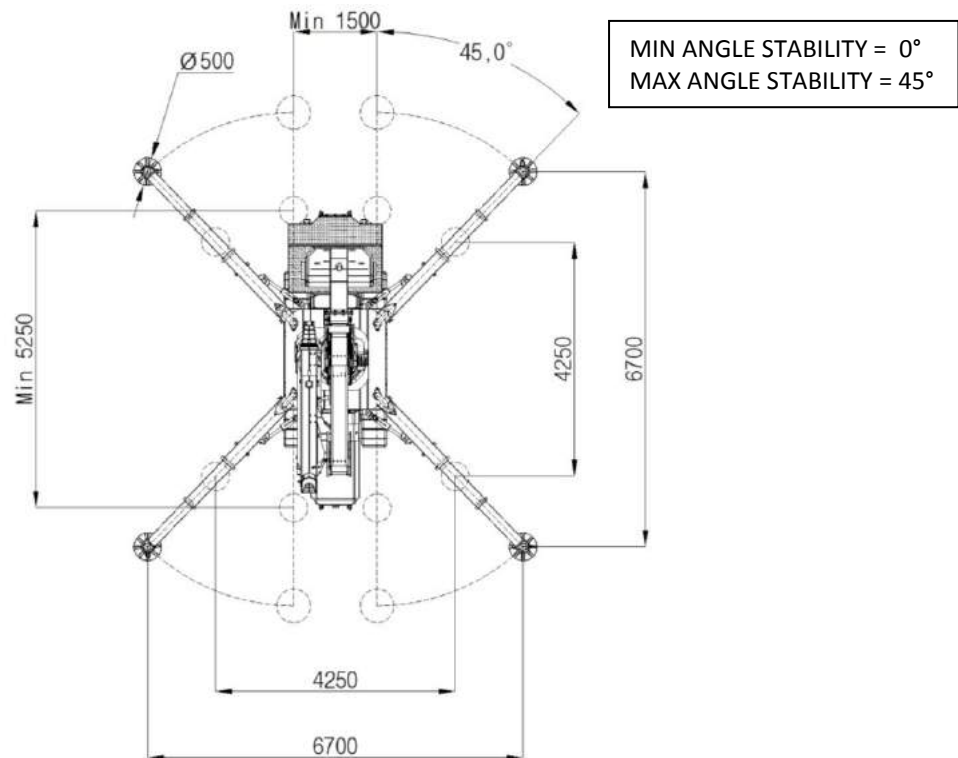
## JF545 - OVERALL DIMENSIONS



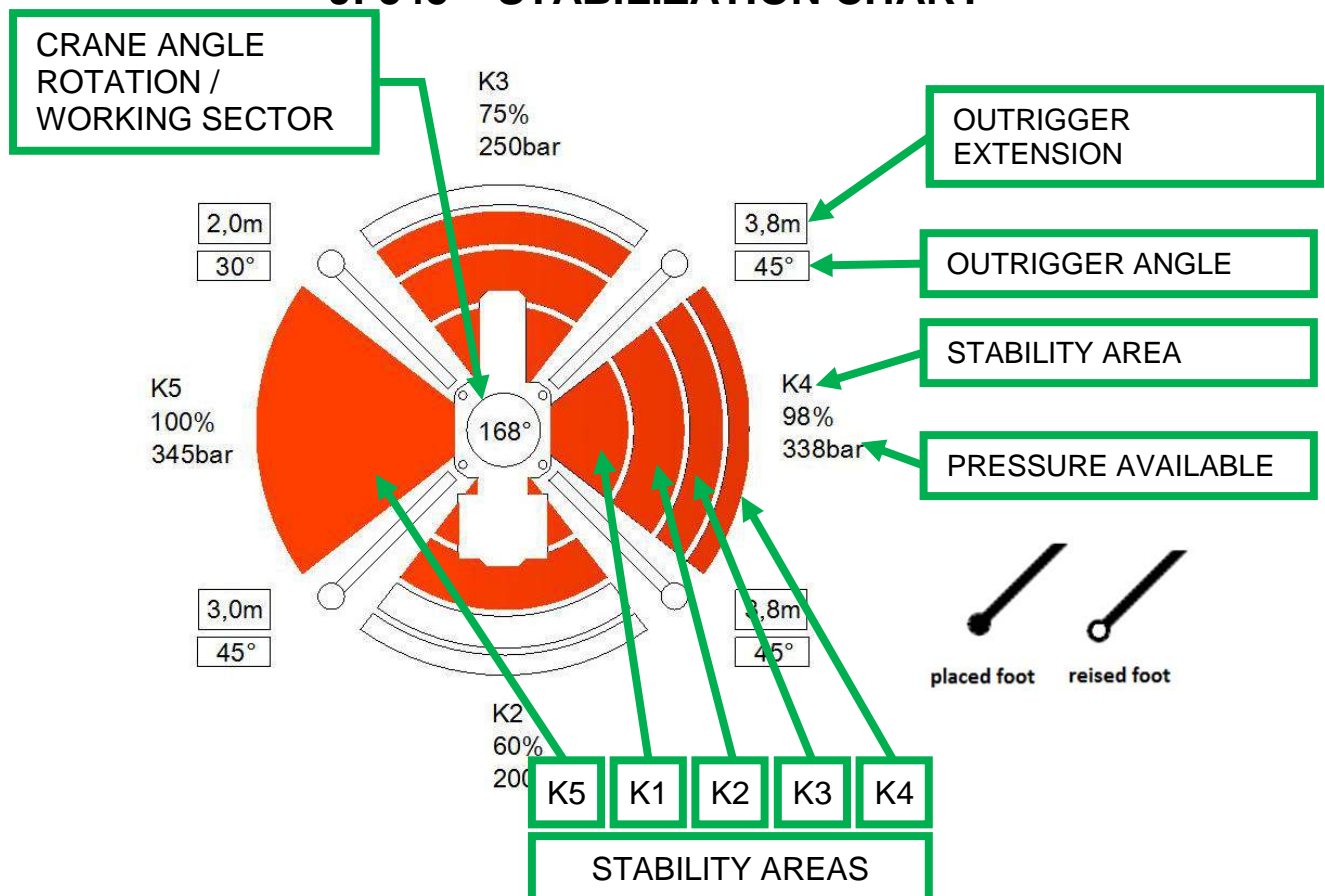
## JF545 – TRANSPORTABILITY



## JF545 – STABILIZATION AREA

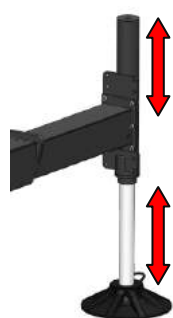


## JF545 – STABILIZATION CHART\*



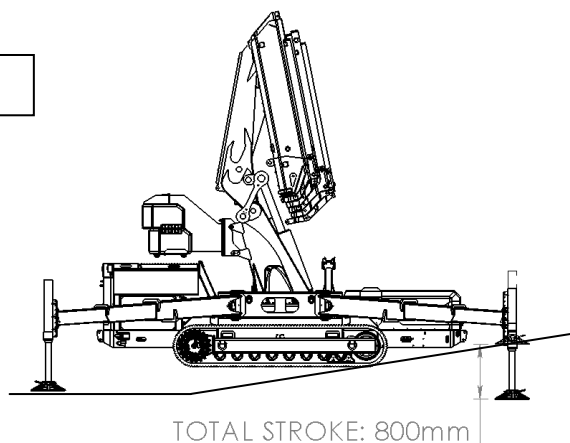
\*The division in 4 areas is a schematic simplification: software adapts level pressure continuously

## JF545 – STABILIZATION ADJUSTMENT

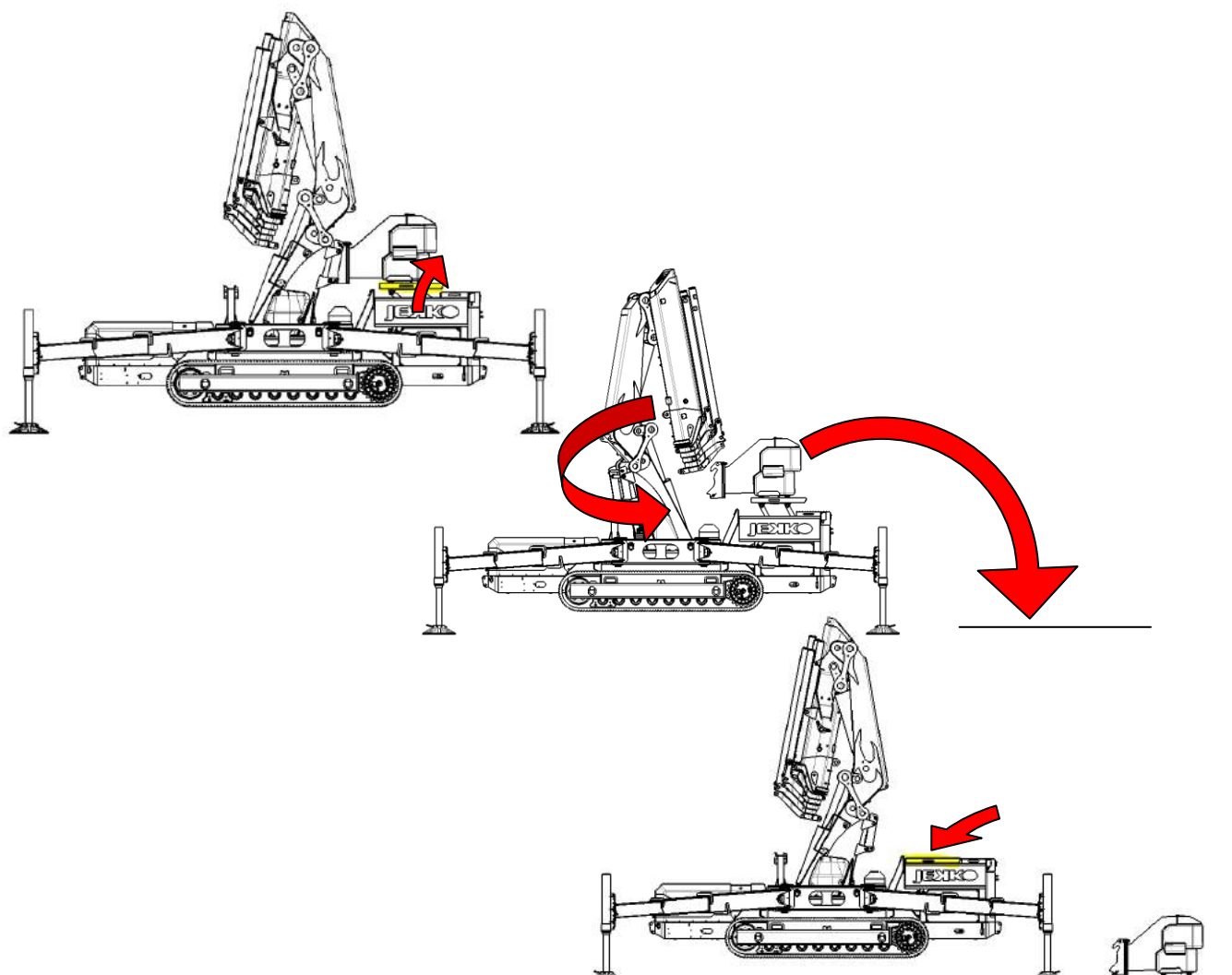


FLANGE ADJUSTMENT:  $\pm 125\text{mm}$

CYLINDER STROKE: 550mm



## JF545 – COUNTERWEIGHT REMOVAL

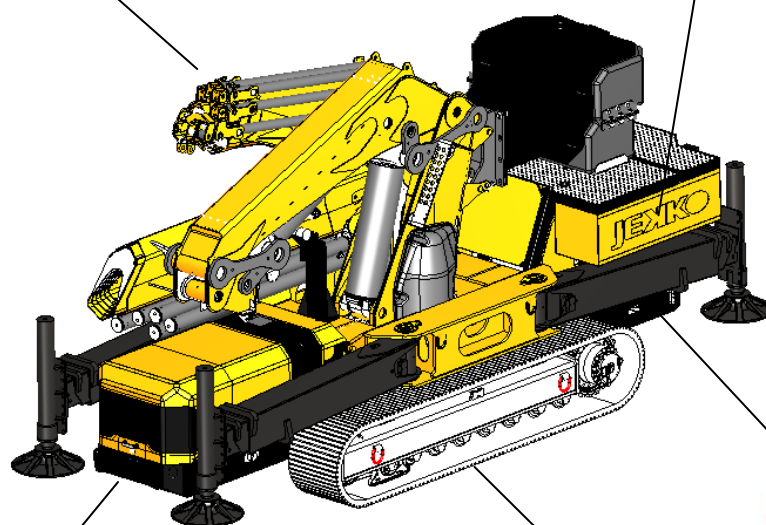
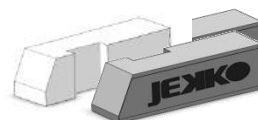


## JF545 – OPTIONS

**MAN BASKET**



**TOOL BOXES**



**POWER PACK**





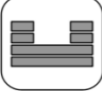
**ENGINE**





- KUBOTA V3307-E3B - STAGE IIIA
- KUBOTA V3800 TIEF4B – STAGE IV/TIER 4F









**LOW MARKING  
WHITE PADS**


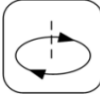



		kg
		13700
		3500
	<b>Tot.</b>	<b>17200</b>

	KUBOTA V3307-DI-T-E3B	 kW	55,4kW / 74 HP	
			DIESEL	
			I	70

	THREE-PHASE ELETRIC POWER	 kW	13 kW / 17,4 HP	
			400V	

	km/h	2,50
	30°	
	kg/cm²	0,85
	kg	11250

	80°	
	360°	
	m	0 - 28,2



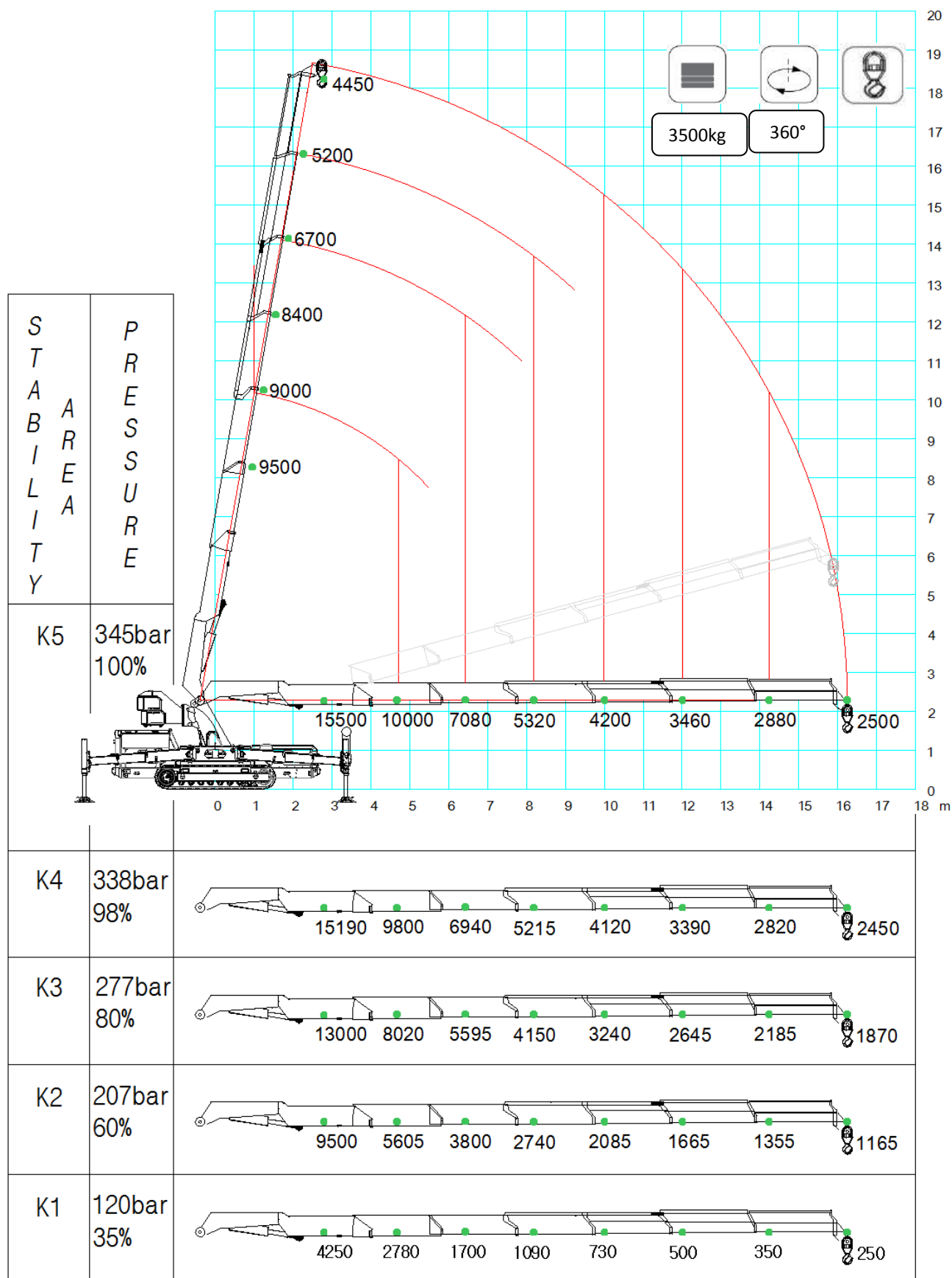
## HOIST PERFORMANCE

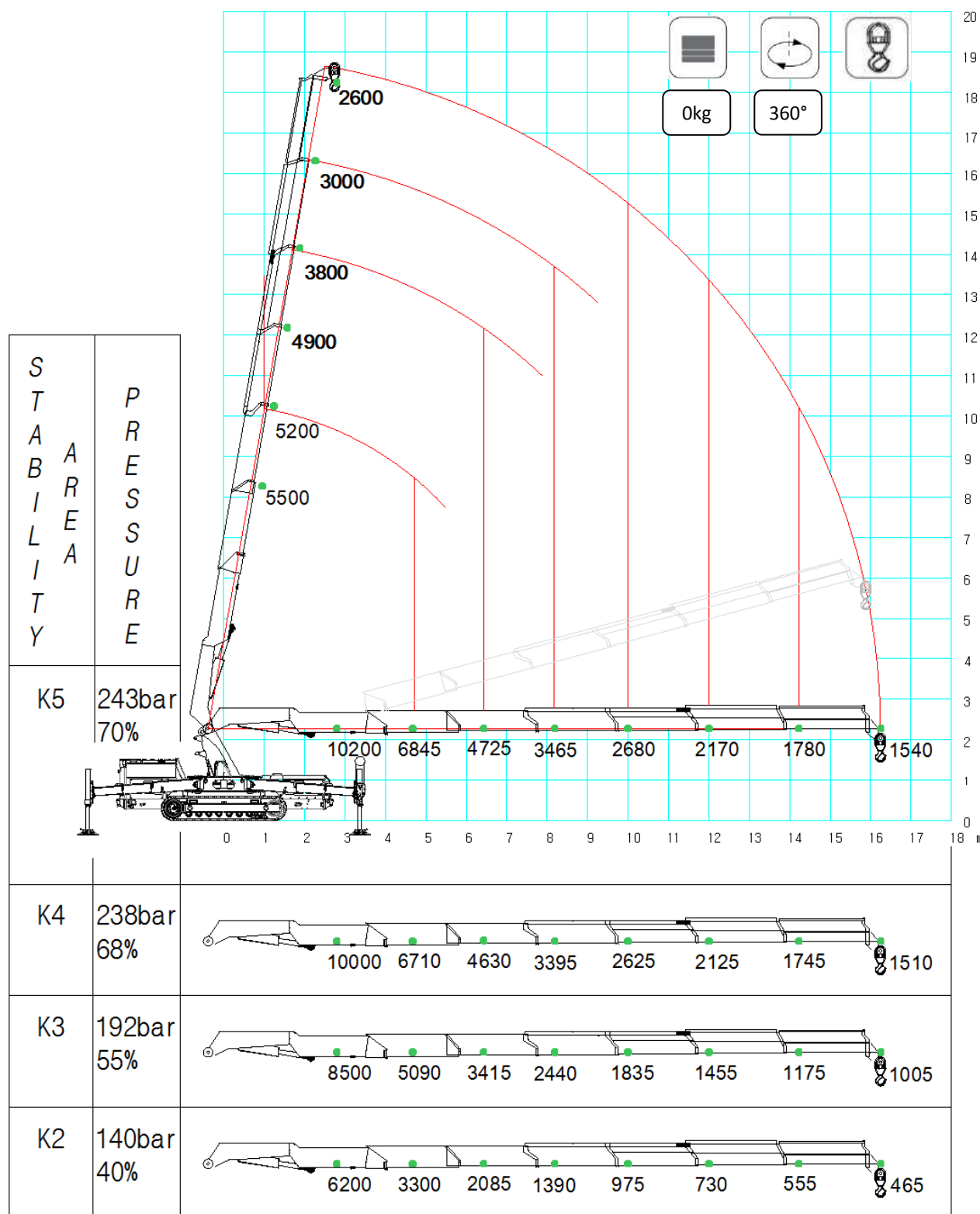
Layer	Max Line Pull*	Normal Line Speed	High Line Speed
	kg	m/min	m/min
1	2600	36,5	
2	2400	40	
3	2200	43,5	
4	2040	47	

\*LMI limited to 2000kg

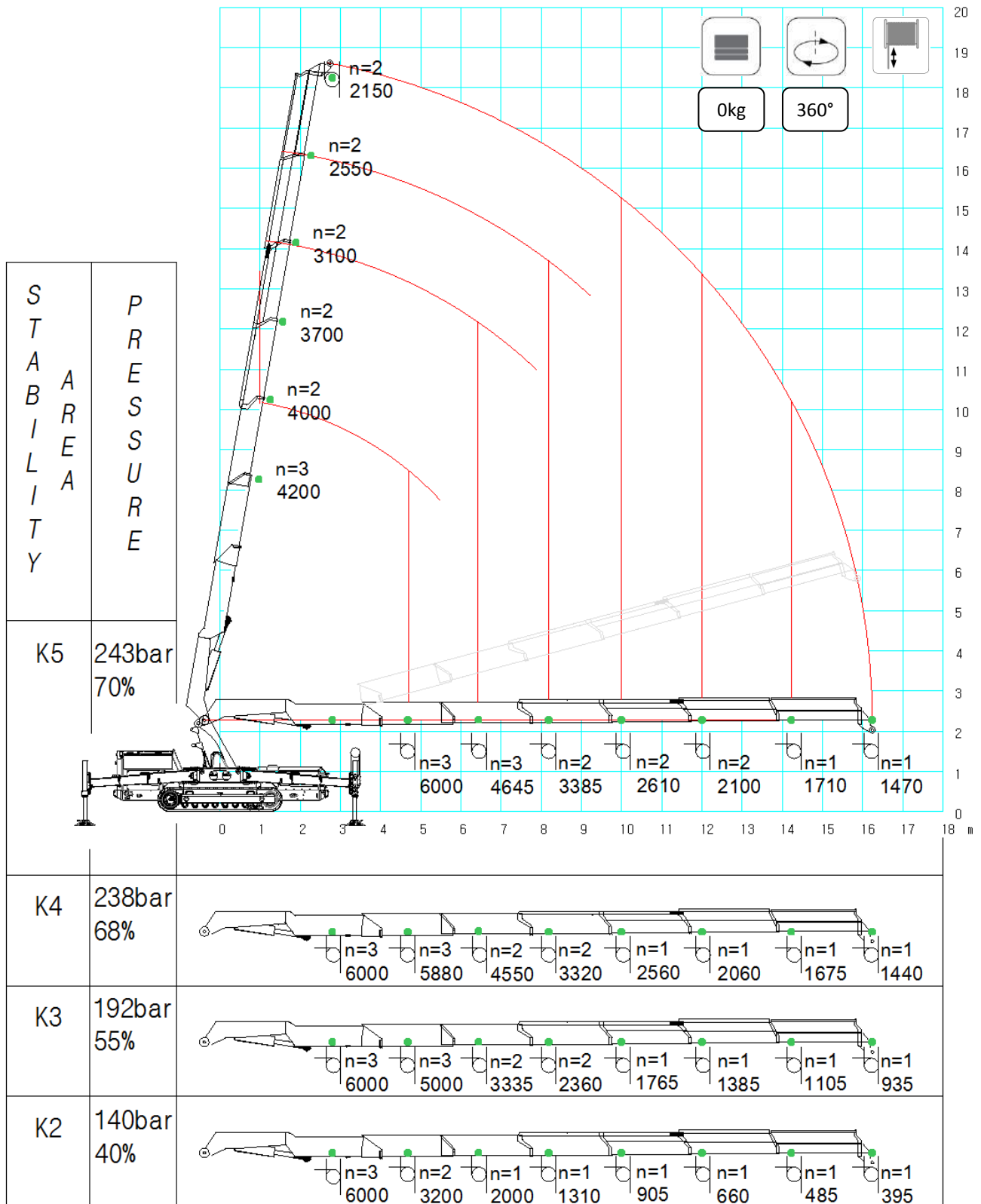
Wire Rope	Diameter	Tot. Length	Max Load
	mm	m	kg
Right lang lay	12	60	

## JF545RA.2.26 with HOOK

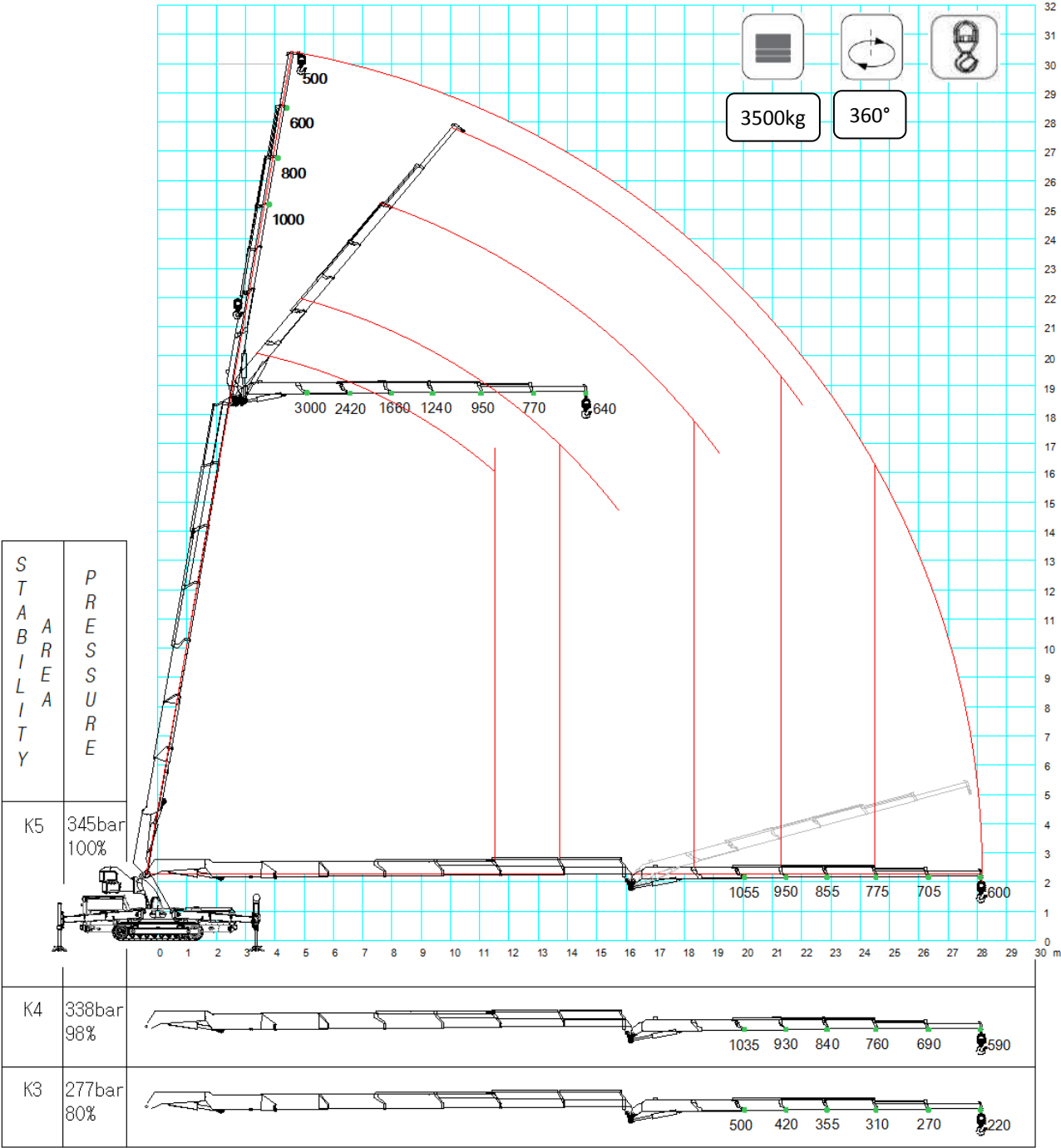


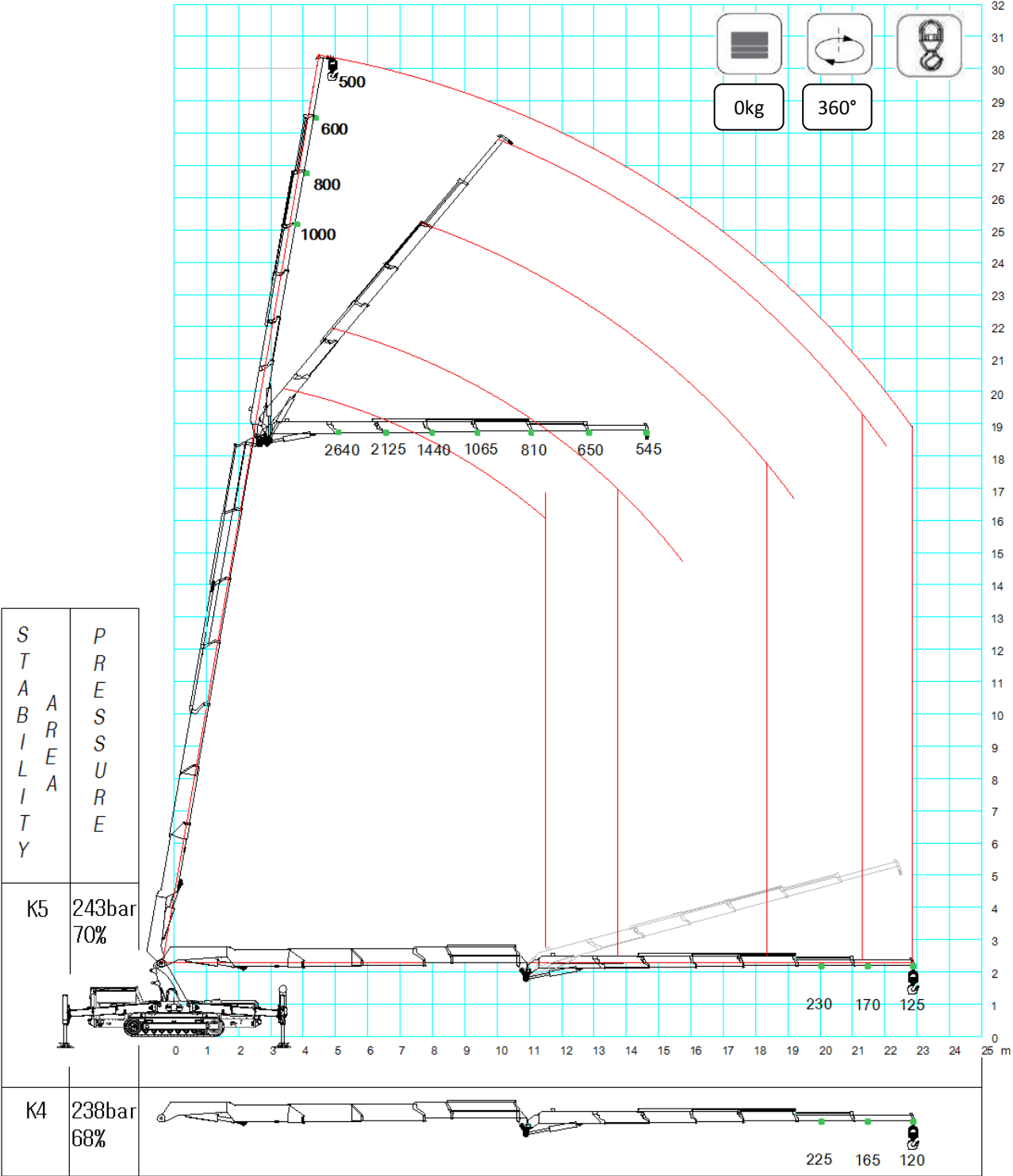


STABILITY		PRESSURE	
K5	315bar 90%		
K4	309bar 88%		
K3	277bar 80%		
K2	207bar 60%		
K1	120bar 35%		

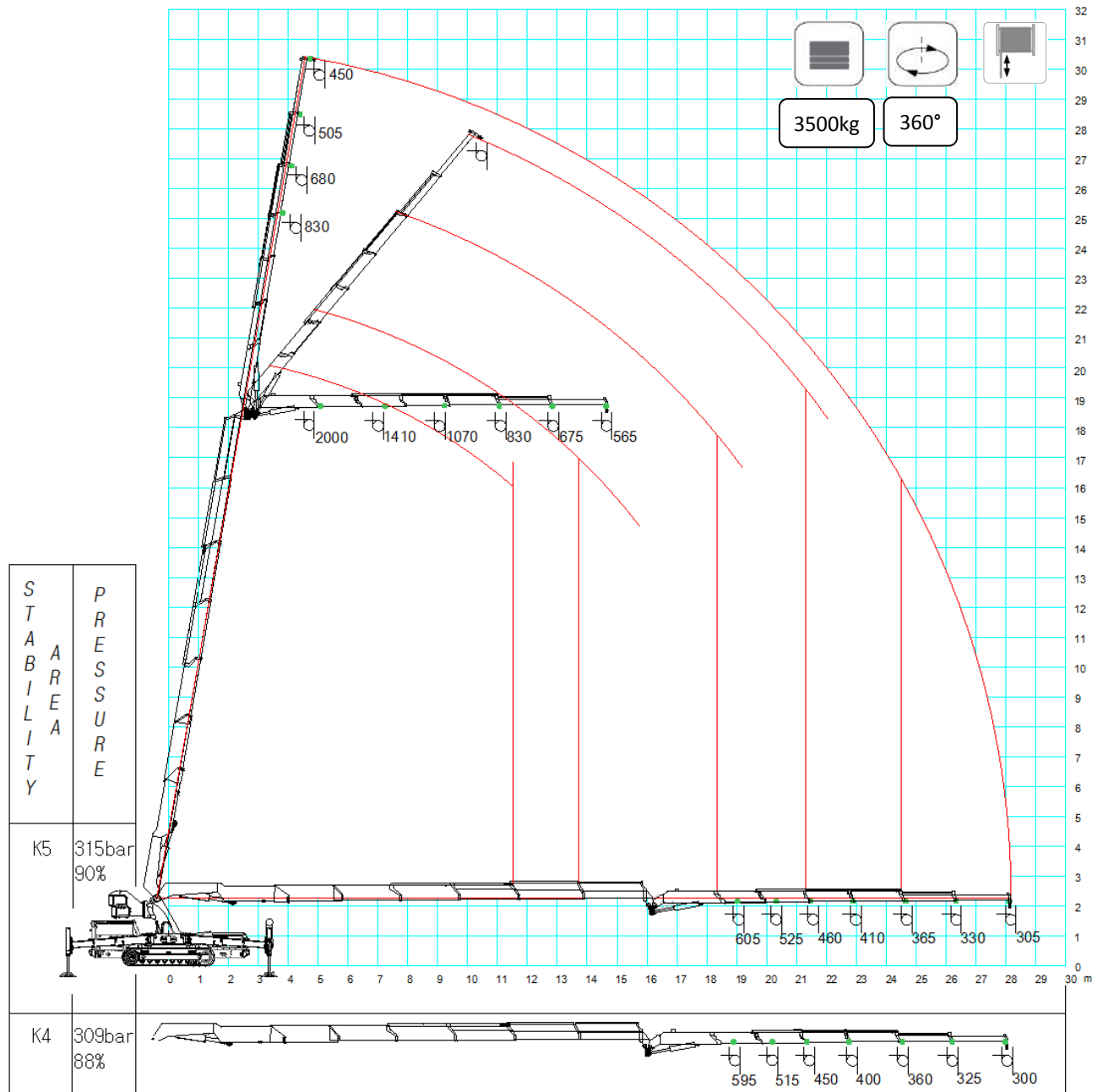


# F545RA.2.26 + L426 with HOOK

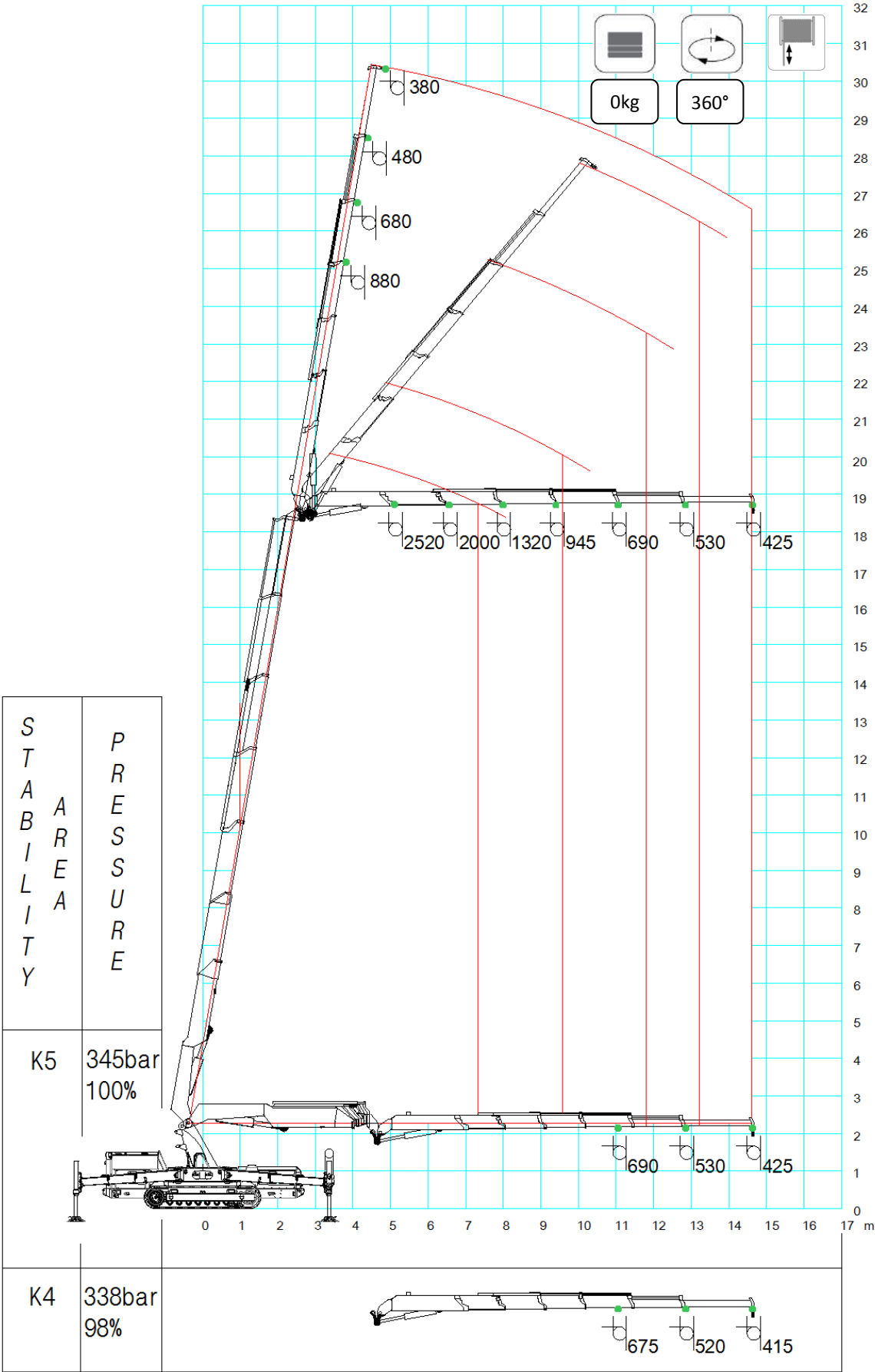




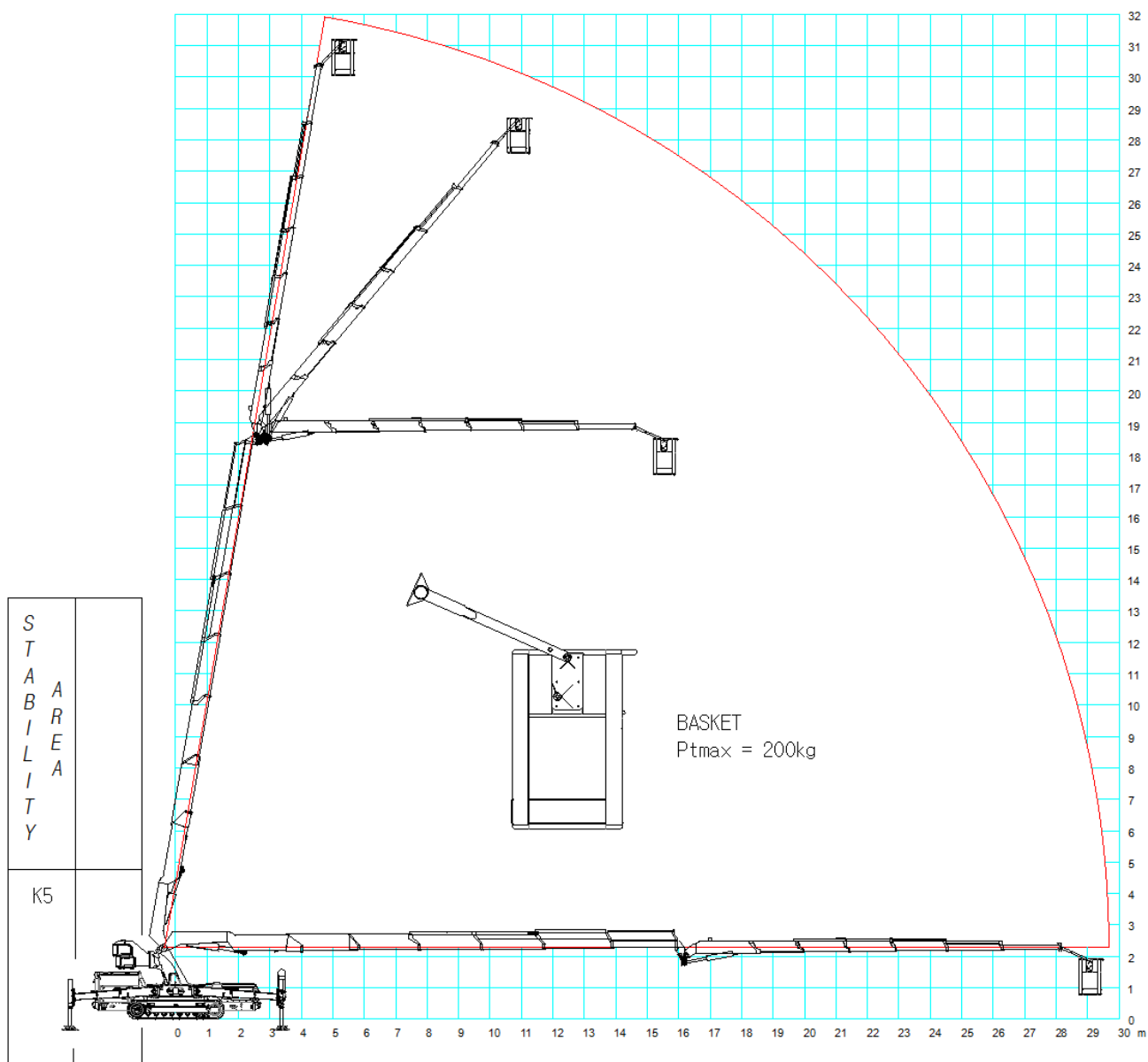
## JF545RA.2.26 with PULLEY



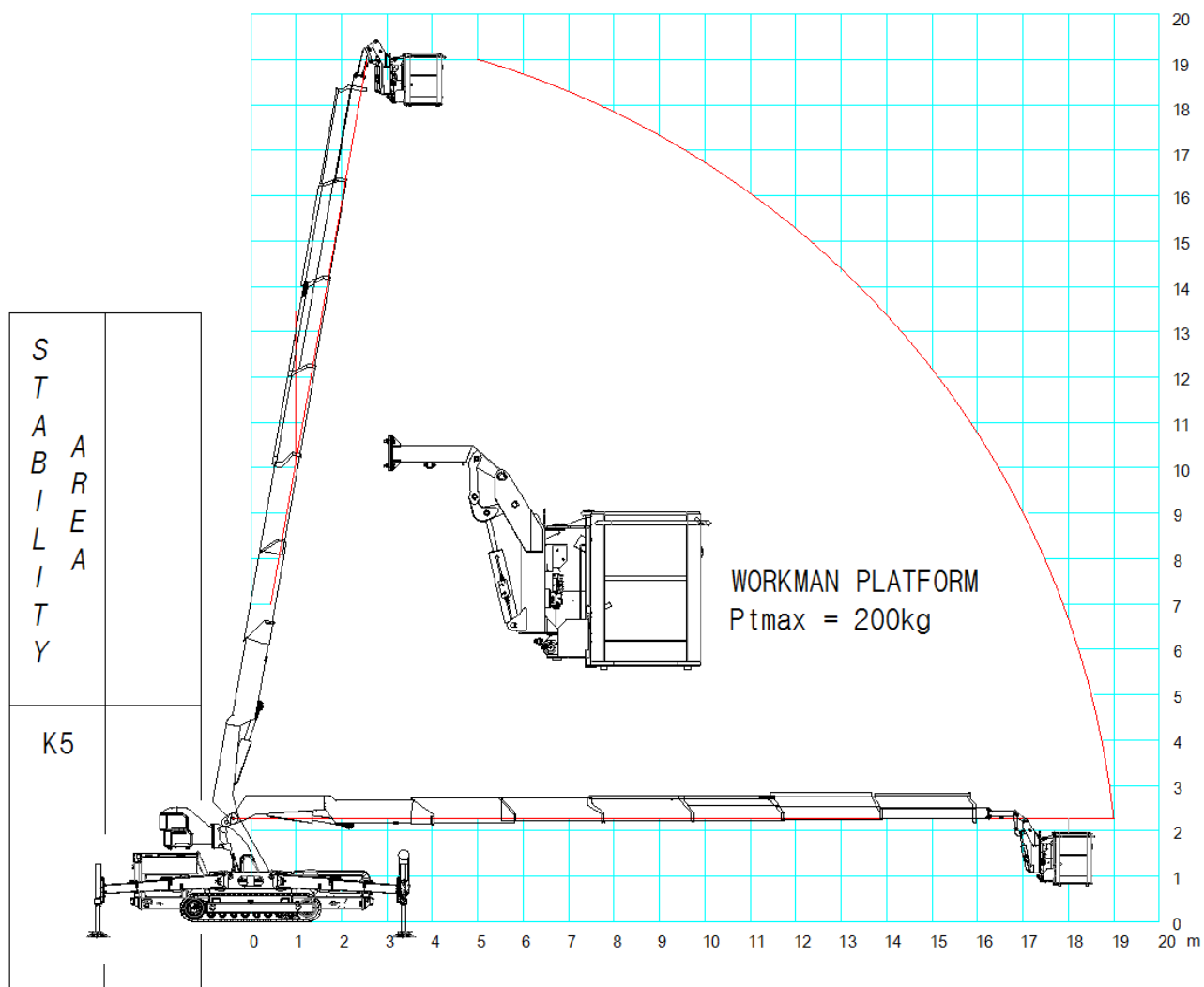




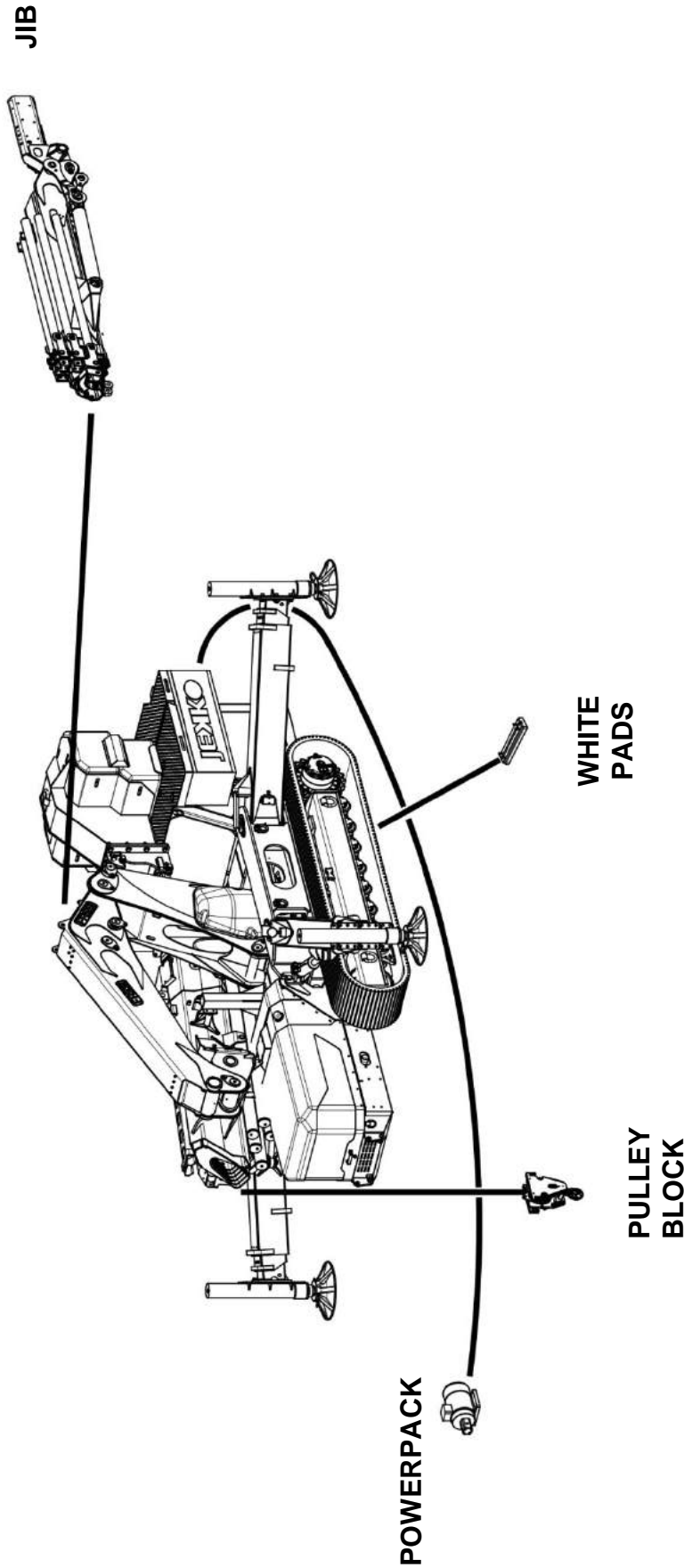
# MAN BASKET



# WORKMAN PLATFORM



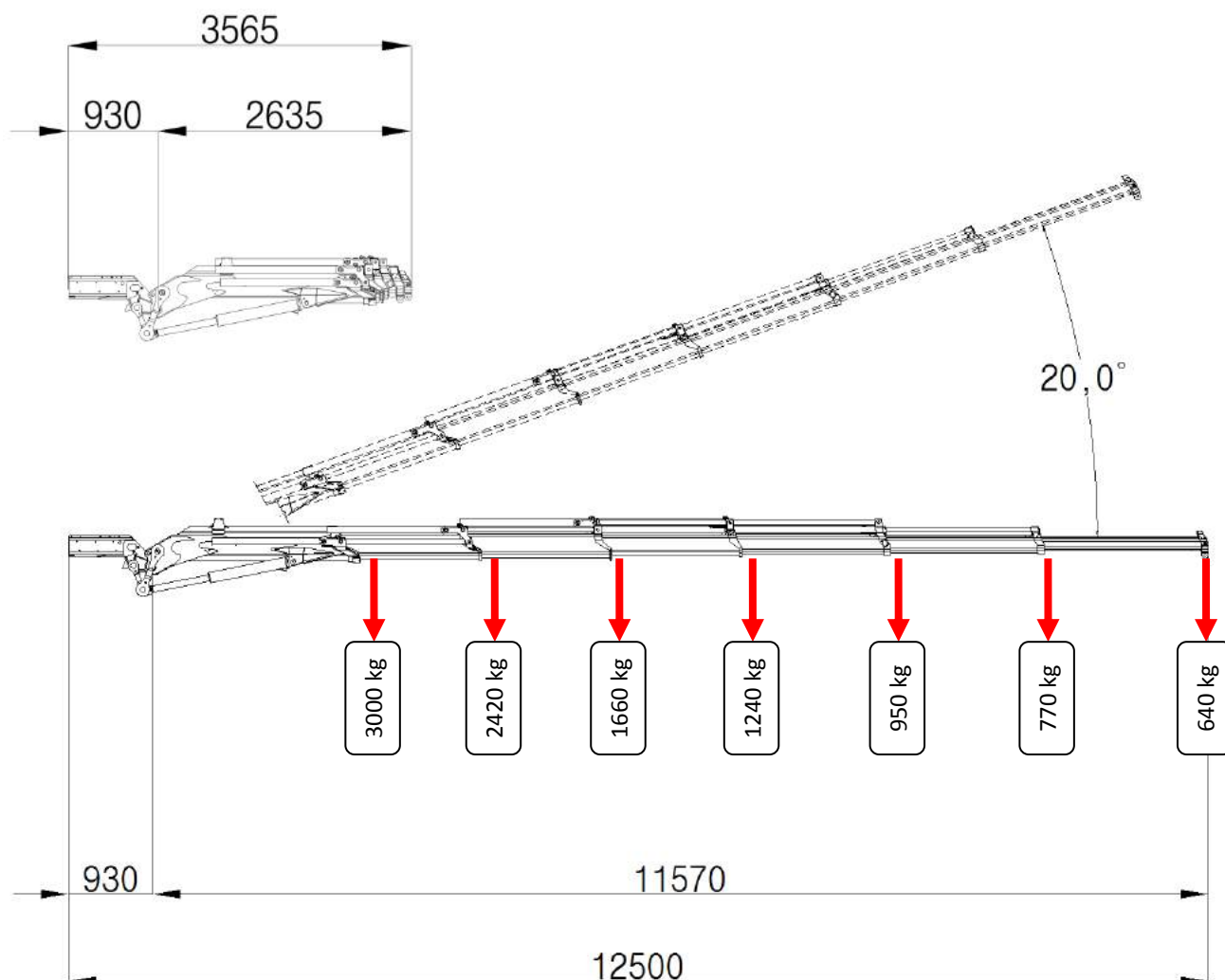
## ACCESSORIES




	STD	PC-02	PC-12
Boom, Covers & Outriggers	<input checked="" type="checkbox"/> RAL2004	<input checked="" type="checkbox"/> RAL_____	<input checked="" type="checkbox"/> RAL_____
Chassis, Frames & Tanks	<input checked="" type="checkbox"/> RAL7001	<input checked="" type="checkbox"/> RAL7001	<input checked="" type="checkbox"/> RAL_____

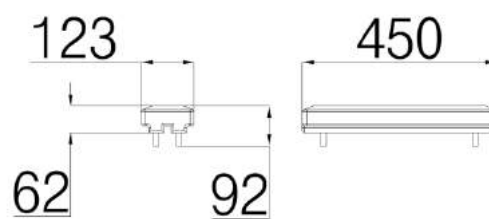
# ACCESSORIES FEATURES


## JIB L426



	kg
	1200

## LOW MARKING PADS



	kg (1 pad)	kg tot (92 pads)
	3,25	300

# SYMBOLS

	Weight		Chart Wheels		Engine		Jib lenght and angle
	Counterweight		Minipicker		Diesel Fuel		Jib Lenght
	Crane		Back Wheel Point Loading		Gasoline Fuel		Jib Radius
	Travel Speed		Front wheel Point Loading		Tank		Hydraulic Jib Lenght
	Gradeability		Travel Speed		Battery		Hydraulic Jib Radius
	Outrigger Load		Gradeability		Power		Mechanical Jib Lenght
	Track Loading		Working Radius		Boom Angle		Mechanical Jib Radius
	Outriggers Setup		Hookblock		Boom Lenght		Manipulator Lenght
	Ext Tracks Width		Slewing		Boom Radius		Manipulator Radius
	Chart On Tracks		Slewing Locked		Jib Hook Radius		Maximum inclination of the machinery
	Jib on board		Without jib on board		Standard		Stabilizing bar
	Horizontal boom angle		Number of vacuum pads		Factory max. load		Building site max. load

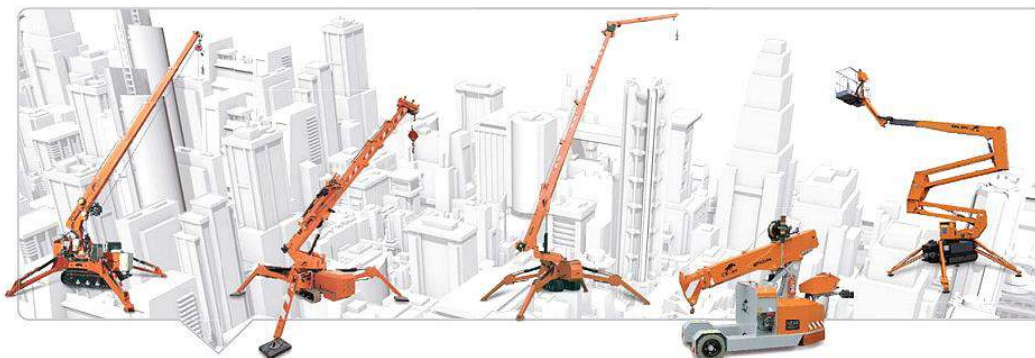
## Remarks referring to load chart

- The load charts are calculated according to EN 13000.
- For the calculation of the load charts at least a wind speed of 9m/s (33km/h) and regarding the load a sail area of 1m<sup>2</sup> per ton load and a wind resistance coefficient of 1.2 on the load have been taken into account. For lifting of loads with large sail areas and/or high wind resistance coefficients the maximum wind speed as stated in the load charts has to be reduced.
- Lifting capacities are given in kilograms.
- The weight of the hook blocks and hooks is part of the load and therefore it must be deducted from the lifting capacities.
- Working radii are mesured from the slewing centre.
- The lifting capacities given for the telescopic boom apply if the folding jib is removed.
- Subject to modification of lifting capacities.

## NOTES



## NOTES



DEALER



JEKKO S.r.l. via Campardone, 1 Z.I. 31014 Colle Umberto (TV) Italy  
tel. +39 0438 1710083 fax +39 0438 1710123  
[www.jekko.it](http://www.jekko.it) - [info@jekko.it](mailto:info@jekko.it)